

Rittal – The System.

Faster – better – everywhere.

Cast aluminium enclosures GA – GA 9107.210

Date : Jul 31, 2017

ENCLOSURES

POWER DISTRIBUTION

CLIMATE CONTROL

IT INFRASTRUCTURE

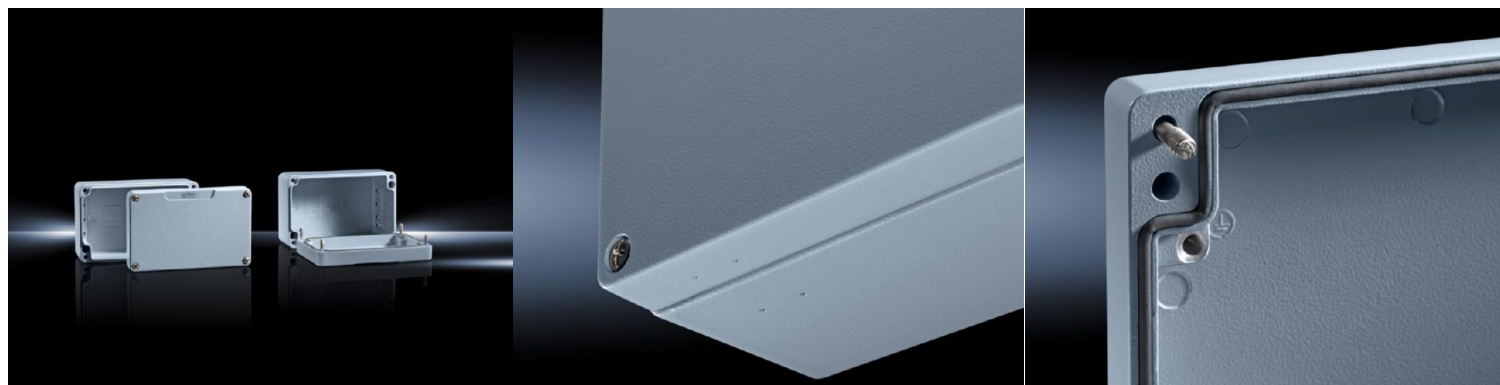
SOFTWARE & SERVICES

FRIEDHELM LOH GROUP



Cast aluminium enclosures GA – GA 9107.210

created: 31.07.2017 build on www.rittal.com/uk-en



Product description

Material: Enclosure: Cast aluminium
Cover: Cast aluminium, all-round CR cellular rubber cord seal

Surface finish: Textured paint

Colour: RAL 7001

**Protection category
IP to IEC 60 529:** IP 66

**Protection category
NEMA:** NEMA 4

IK Code: IK08

Supply includes: Enclosure with cover
Cover screws, captive
Screws for attaching support rails
Screw for connection of the PE conductor

Product modification: From September 2016, GA housings are delivered in an optimised design
The enclosures have a Rittal logo on the lid and carry the CE label

Basic material: Cast aluminium

Product features

Dimensions: Width: 250 mm
Height: 80 mm
Depth: 57 mm

Packs of:	1 pc(s).
Weight/pack:	0.76 kg
EAN:	4028177145399
Customs tariff number:	85389099
ETIM 6.0:	EC000261
ETIM 5.0:	EC000058
eCl@ss 8.0/8.1:	27180101
eCl@ss 7.0/7.1:	27180101
eCl@ss 6.0/6.1:	27180101
eCl@ss 5.1/5.1.4:	27180102
Product description (long):	GA Cast aluminium enclosure, WHD: 250x80x57 mm, Cast aluminum, without mounting plate, with cover
Approvals	
Certificates:	IK-Code Protection category
Declarations:	Declaration of conformity

2017 © Rittal Ltd UK